



Design

A design is a plan or drawing of something that you intend to make. It often shows the look and function of an object before it is made. Adding labels to your design can help you to think about what you will need.

Hydria

An ancient Greek vessel in clay or bronze used to carry water. c. 500 BCE (British Museum, London).



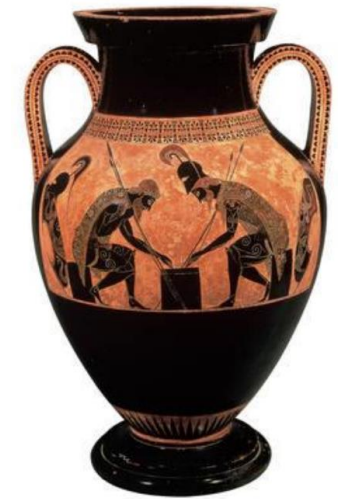
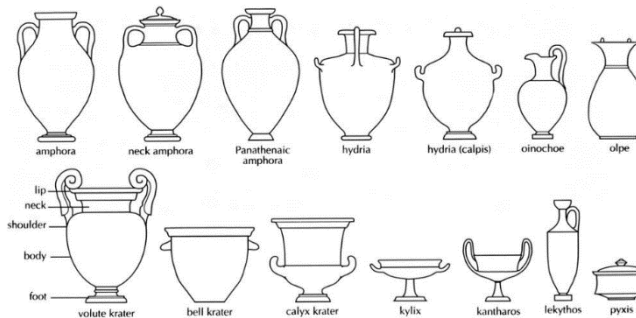
Stamnos

A stamnos (plural stamnoi) is a type of Greek pottery used to store liquids. Stamnoi have a similar function to kraters and are thought to have been used to stir wine and water together to dilute them. However, some stamnoi have lids, indicating that they were used for storage too.

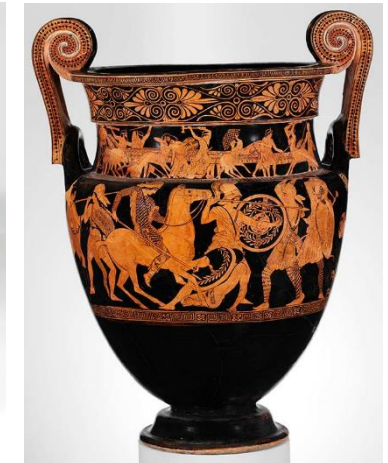


Key vocabulary:

- Ceramics:** A term given to any artwork produced using clay.
- Clay:** Moist, sticky earth. Liquid clay is called slip.
- Pottery:** Objects shaped from moist clay and hardened by heat.
- Modelling:** Working clay into a shape or form.
- Scoring:** Cutting or scratching the surface, used to join parts of a pot e.g. a handle.
- Firing:** Applying heat to harden clay in a large oven called a kiln.
- Glaze:** A coating of coloured liquid glass applied to ceramics between firings.
- Hollowing:** Removing the inside of a solid.
- Pinching:** Squeezing between the thumb and a finger.
- Coiling:** Fixing rings of clay on top of each other.
- Thrown vessels:** Any ceramics where a kick or electric wheel is used to produce the arts work.
- Slab:** A flat evenly cut/rolled layer.
- Wedging & Kneading:** Squeezing or pressing together using the hands & fingers.



Greek Pottery



- names:** stamnos • hydria • volute krater • lekythos • kylix • oinochoe
- uses:** carrying and pouring water • pouring wine • drinking wine
storing wine • to mix wine and water in • to hold oil